



FrameFAST™

WOOD FRAMING SYSTEM

FEATURES

- No predrilling
- Eliminates ladders
- Eliminates nail guns and pneumatic hoses
- Code compliant across USA and Canada
- Guaranteed corrosion resistance
- Free bit in every package

LENGTHS: 6"

PACKAGING QUANTITIES

200 pc box

DESCRIPTION

The FrameFAST system consists of both the structural wood screws and the FrameFAST tool. The 6" FrameFAST structural wood screw is a code compliant replacement to hurricane ties and it's fully threaded design provides superior uplift and lateral resistance.

SAFETY AND SPEED

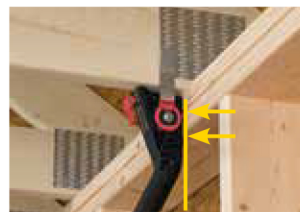
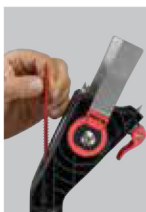
The FrameFAST tool is specifically designed to install the FrameFAST fastener in a consistent and safe manner by eliminating the need for ladders or scaffolding. Productivity and safety are significantly increased.



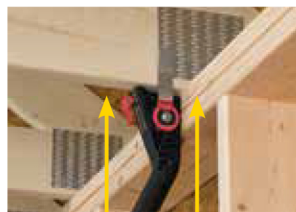
INSTALLATION PROCEDURE



Load screw in chamber



Place head flush on plate



Stab up, pull trigger & drive



GUARANTEED CORROSION RESISTANCE

FrameFAST is guaranteed not to rust or corrode for the life of the project.

FrameFAST is not recommended for use in salt water applications (within 1,000 ft.).



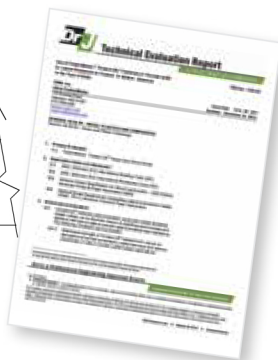
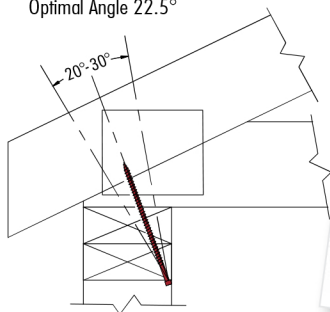
FrameFAST SKU Selection Guide

LENGTH	TYPICAL APPLICATIONS	PACKAGING QTY	SKU
6"	Rafter or Truss to Top Plate	200 pc box	FMFF006-200
FrameFAST Tool			FMFFTOOL-T2TP



ADDITIONAL RESOURCES

Optimal Angle 22.5°



Technical Evaluation Report

FastenMaster has partnerships with accredited third party testing and evaluation agencies to establish code-compliant design values for use by design professionals. An engineer stamped evaluation report for this connection, published by DRJ Engineering, can be found by visiting us at FastenMaster.com/resources.

For additional technical data, refer to pages 41 and 42 of this catalog

ask the
FastenMaster®

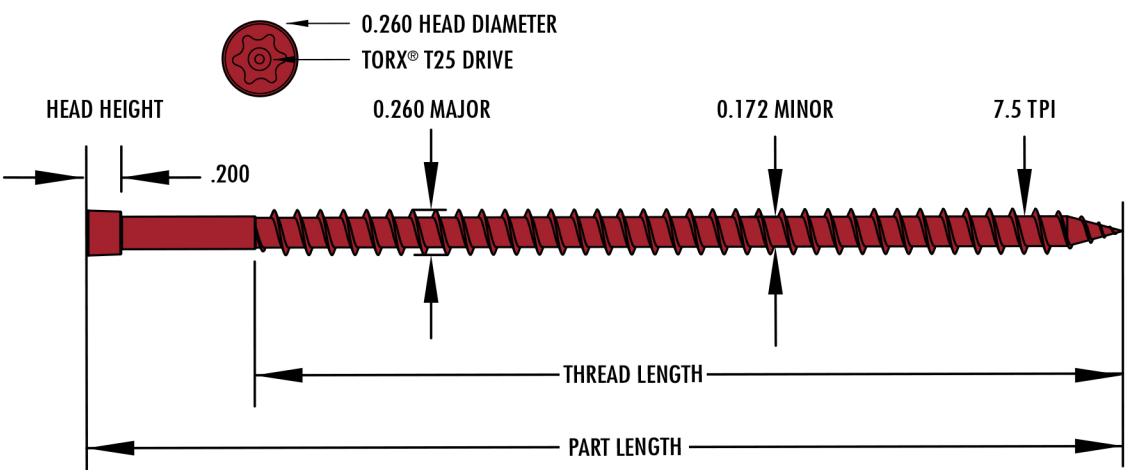
Ask the FastenMaster Installation Video

Our Ask the FastenMaster video series includes installation information for many of our products, including our FrameFAST video. These can be viewed on our website.

For technical support or to place an order: 800-518-3569 or www.FastenMaster.com

FrameFAST™

PRODUCT SPECIFICATION



FrameFAST Selection Guide		
Part Length	Thread Length	Part Number
6"	5"	FMFF006

FRAMEFAST SAMPLE APPLICATIONS

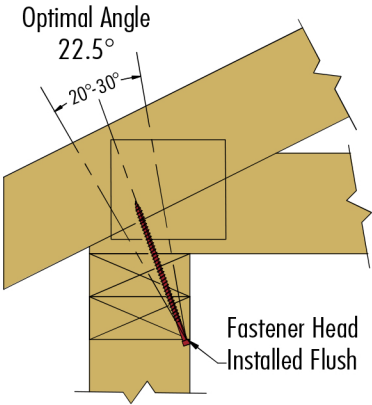
Truss/Rafter to Top Plate Connection

The FrameFAST fastener can be used as a direct replacement for most hurricane ties to resist uplift and lateral loads on trusses or rafters attached to the top plates of the wall. To verify the adequacy for your specific connection, make sure that the allowable loads in **Table 1** exceed the design loads on the plan or allowable loads for the connector being specified. For complete installation instructions and additional technical information, consult the **Truss and Rafter to Top Plate Technical Evaluation Report, TER No. 1503-03**, available at www.FastenMaster.com.

Table 1 Allowable Loads								
Uplift			Shear Perpendicular to Wall			Shear Parallel to Wall		
SPF / H. Fir	D. Fir	S. Pine	SPF / H. Fir	D. Fir	S. Pine	SPF / H. Fir	D. Fir	S. Pine
595	655	690	400	455	485	330	300	285

Table 1 Footnotes

- A standard wind load duration factor of 1.6 has been applied per NDS Table 2.3.3. Adjustments to lower this factor may be made at the engineer's discretion. No further increase is allowed.
- Assumes fastener installed using the FrameFAST tool into double top plate or 3" from top of header beam with the fastener head driven within 1/4" of flush.
- For applications where wall and roof framing members are of different species use the allowable load corresponding to the weaker species.
- Tabulated loads based on testing to ICC-ES AC233 and application specific testing as reported in Technical Evaluation Report 1503-03.

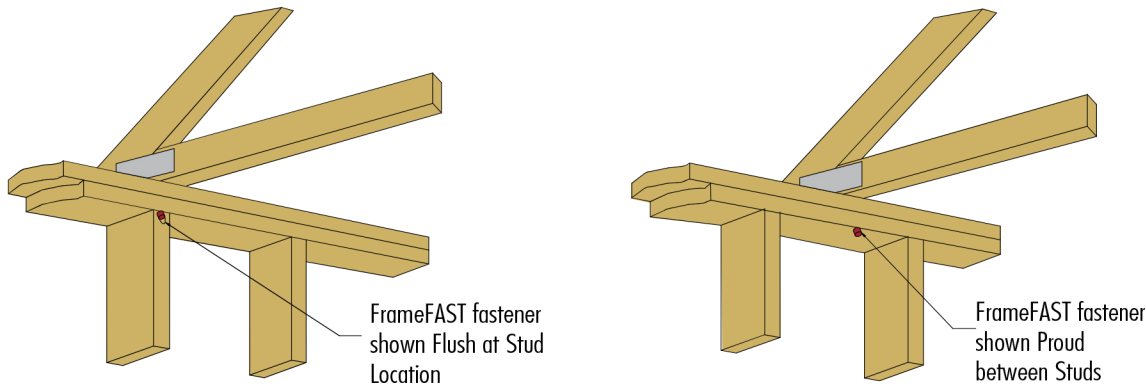


Fastener Depth:

The FrameFAST fastener is designed to be installed with the head either sunk flush with the wall framing or left up to 1/4" proud to allow for easier inspection when needed. To ensure a consistent and accurate fastener depth, ensure that the head of the FrameFAST tool is held flush to the top plate during installation. To adjust the tool for leaving the fastener head proud, simply reposition the Spacer Tab from the tool handle to the bottom of the hexagonal shaft.

Over Studs and Headers:

The FrameFAST fastener is designed to be used when the truss or rafter falls directly over a stud / header or in the cavity between studs. The FrameFAST tool is designed to deliver the fastener at the correct angle in order to ensure the proper angle as well as keep the fastener out of the way of the drywall. There are no reductions needed when the screw is used in the cavity vs over a stud.



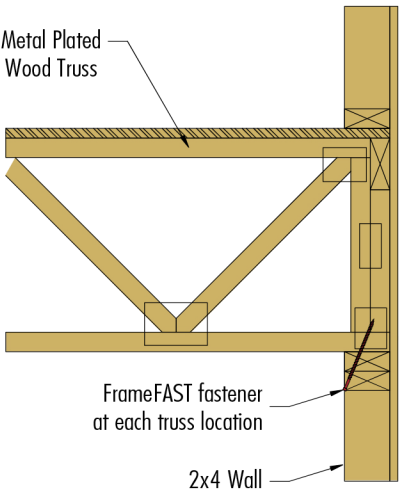
Girder Truss Applications:

The FrameFAST fastener and tool can be used in multi ply girder applications. To use the tool simply articulate one of the metal alignment wings out of the way to make the head of the tool align with the truss. A reduction factor of 0.8 should be taken for each screw when installing in this application.

Floor Truss Application:

When plans call for an uplift connector on floor trusses the FrameFAST fastener and tool can be used to make this connection as well. In order to use the tool both of the alignment wings need to be in the down position. Make sure to center the tool under the bottom cord of the member.

Table 2 Allowable Loads (Values)	
Species	Uplift
SPF / H. Fir (0.42)	535 lbs
D. Fir (0.5)	590 lbs
S. Pine (0.55)	621 lbs



For technical support or to place an order: 800-518-3569 or www.FastenMaster.com